

ULTIMATE SEYCHELLES

DISCOVER OUR SUITES
AND RESIDENCE VILLAS [▶](#)



FOUR SEASONS RESORT

Seychelles

DISCOVER SEYCHELLES' BEST-KEPT SECRET

Gaze at the shifting spectrum of blue – from the turquoise and azure ocean to undulating indigo sunsets. Live your dream of romance and adventure. Feel like an island castaway lost in a world of luxurious privacy. >





SIZE AND STYLE UNPARALLELED IN THE SEYCHELLES

In this intimate Four Seasons Resort – with only 67 stylish treehouse villas – savour the ultimate Seychelles experience in our collection of Suites and Residence Villas, perched on stilts on the jungle hillside or nestled amidst greenery, just steps from the white-sand beach. [➤](#)

ESCAPE INTO YOUR OWN PRIVATE SANCTUARY

Enjoy an open-air massage beside your infinity pool, linger over a sunset dinner in romantic seclusion, or host the most unforgettable party in paradise.

[DISCOVER OUR SUITES AND RESIDENCE VILLAS](#) 

 [VIEW OUR VIDEO](#)



SUITES

Ideal for families and groups of friends or couples looking for an abundance of space, Suites go beyond our one-bedroom villas by including a separate living room and two or three bedrooms – giving the perfect balance of togetherness and privacy. Suites are located within the main body of the Resort, keeping you close to the beach, bars, restaurants and spa. Enjoy a complete Four Seasons Resort experience, enhanced with added space and exclusivity.

[3-BEDROOM ROYAL SUITE >](#)

[2-BEDROOM PRESIDENTIAL SUITE >](#)

[2-BEDROOM HILLTOP OCEAN-VIEW SUITE >](#)

[2-BEDROOM OCEAN-VIEW SUITE >](#)



RESIDENCE VILLAS

Much grander in scale, Residence Villas are impressive for larger groups and lavish entertaining. Home designs feature a variety of indoor and outdoor living areas, a complete kitchen and three to five bedrooms. Set within spacious plots of 0.4 to 1.5 hectares (1 to 3.7 acres), Residence Villas are secluded high on the Resort's northern and southern hillsides for the utmost privacy and the widest views. Relax into your own self-contained home away from home – with Resort amenities nearby and Four Seasons service always at your call.

[5-BEDROOM RESIDENCE VILLA >](#)

[4-BEDROOM RESIDENCE VILLA >](#)

[3-BEDROOM RESIDENCE VILLA >](#)



WHY YOU'LL LOVE IT

HIGHLIGHTS

- Private access to the beach
- Indoor and outdoor living and entertaining spaces
- Formal dining for eight
- Pantry for light meals and snacks
- Study and den with entertainment centre
- Private pool and whirlpool

VIP SERVICES

- Butler service included (See Amenities)
- Breakfast prepared daily by your butler
- Complimentary poolside cocktails served daily



THREE-BEDROOM

ROYAL SUITE

Our only suite with direct access to a secluded section of Petite Anse beach, the Three-Bedroom Royal Suite provides up-close views of the Indian Ocean. This suite is comprised of four pavilions. The main pavilion is a two-storey space, entered on the upper level with a living room, dining room, pantry and terrace. Downstairs, there's a study and family room, open to an expansive outdoor living space, complete with infinity-edge pool and whirlpool. The three bedrooms are each located in their own pavilion, each with a sitting area, verandah and lavish bathroom with outdoor shower.

[VIEW FLOOR PLAN >](#)

[VIEW STANDARD AMENITIES >](#)

SUITES

| | | |
|-----------|--------------------------|---|
| 3-BEDROOM | ROYAL SUITE | > |
| 2-BEDROOM | PRESIDENTIAL SUITE | > |
| 2-BEDROOM | HILLTOP OCEAN-VIEW SUITE | > |
| 2-BEDROOM | OCEAN-VIEW SUITE | > |

RESIDENCE VILLAS

| | | |
|-----------|-----------------|---|
| 5-BEDROOM | RESIDENCE VILLA | > |
| 4-BEDROOM | RESIDENCE VILLA | > |
| 3-BEDROOM | RESIDENCE VILLA | > |



WHY YOU'LL LOVE IT

HIGHLIGHTS

- Living and entertaining areas for up to eight guests
- Exclusive beachside setting
- Sizeable wraparound sundeck, perfect for In-Villa Dining
- Separate service entrance
- Pantry for light meals and snacks
- Unique water features
- Private infinity-edge pool and whirlpool
- Sunken bathtub in each bedroom
- Private outdoor showers

VIP SERVICES

- Butler service included (See Amenities)
- Breakfast prepared daily by your butler
- Complimentary poolside cocktails served daily

[VIEW FLOOR PLAN >](#)

[VIEW STANDARD AMENITIES >](#)

TWO-BEDROOM

PRESIDENTIAL SUITE

The closest villa to the beach, our Two-Bedroom Presidential Suite overlooks the white sands of Petite Anse for a constantly magical experience. This suite is comprised of three spacious pavilions. The central pavilion includes the living room, dining room and study, all looking across the terrace to the whirlpool, infinity-edge pool and the turquoise bay. Placed on opposite sides of the pool to ensure privacy, the two bedroom pavilions each include sitting areas and luxurious bathrooms with outdoor showers.

SUITES

| | | |
|-----------|--------------------------|---|
| 3-BEDROOM | ROYAL SUITE | > |
| 2-BEDROOM | PRESIDENTIAL SUITE | > |
| 2-BEDROOM | HILLTOP OCEAN-VIEW SUITE | > |
| 2-BEDROOM | OCEAN-VIEW SUITE | > |

RESIDENCE VILLAS

| | | |
|-----------|-----------------|---|
| 5-BEDROOM | RESIDENCE VILLA | > |
| 4-BEDROOM | RESIDENCE VILLA | > |
| 3-BEDROOM | RESIDENCE VILLA | > |



WHY YOU'LL LOVE IT

HIGHLIGHTS

- On the hilltop for maximum privacy
- Views of Petite Anse Bay and the surrounding mountains
- Surrounding jungle provides opulent seclusion
- Separate service entrance
- Pantry for light meals and snacks
- Extra-large terraces and balconies
- Whirlpool and plunge pool

VIP SERVICES

- Butler service available on request (See Amenities)
- Breakfast prepared daily by your butler
- Complimentary poolside cocktails served daily



TWO-BEDROOM

HILLTOP OCEAN-VIEW SUITE

Soaring above the beach, our Two-Bedroom Hilltop Ocean-View Suites promise panoramic views of Petite Anse Bay. Enter on the upper level into the airy living/dining room. Downstairs, you'll find an expansive sundeck with whirlpool and plunge pool. For privacy, the two bedroom pavilions are placed on opposite sides of the pool. Each features a sitting area and a sumptuous bathroom with a glass-walled indoor shower plus an outdoor shower.

[VIEW FLOOR PLAN >](#)

[VIEW STANDARD AMENITIES >](#)

SUITES

| | | |
|-----------|--------------------------|---|
| 3-BEDROOM | ROYAL SUITE | > |
| 2-BEDROOM | PRESIDENTIAL SUITE | > |
| 2-BEDROOM | HILLTOP OCEAN-VIEW SUITE | > |
| 2-BEDROOM | OCEAN-VIEW SUITE | > |

RESIDENCE VILLAS

| | | |
|-----------|-----------------|---|
| 5-BEDROOM | RESIDENCE VILLA | > |
| 4-BEDROOM | RESIDENCE VILLA | > |
| 3-BEDROOM | RESIDENCE VILLA | > |



WHY YOU'LL LOVE IT

HIGHLIGHTS

- 313 square metres (3,370 square feet) of outdoor living space
- Best ocean views of all the Suites
- Substantial sundeck
- Separate service entrance
- Pantry for light meals and snacks
- Dining area for up to six guests
- Whirlpool and plunge pool

VIP SERVICES

- Butler service available on request (See Amenities)
- Breakfast prepared daily by your butler
- Complimentary poolside cocktails served daily



TWO-BEDROOM

OCEAN-VIEW SUITE

Perched within the jungle and granite hillside in the middle section of the Resort, our Two-Bedroom Ocean-View Suites provide gorgeous views of the Indian Ocean and Petite Anse beach. Enter on the upper level to the sleek and airy living/dining room. Downstairs you'll find a huge teak sun deck with a whirlpool and plunge pool. For maximum privacy, the two bedroom pavilions are located on opposite sides of the pool. Each features a sitting area and a sumptuous bathroom with a glass-walled indoor shower plus an outdoor shower. Enjoy al fresco living at its most luxurious.

[VIEW FLOOR PLAN >](#)

[VIEW STANDARD AMENITIES >](#)

SUITES

| | | |
|-----------|--------------------------|---|
| 3-BEDROOM | ROYAL SUITE | > |
| 2-BEDROOM | PRESIDENTIAL SUITE | > |
| 2-BEDROOM | HILLTOP OCEAN-VIEW SUITE | > |
| 2-BEDROOM | OCEAN-VIEW SUITE | > |

RESIDENCE VILLAS

| | | |
|-----------|-----------------|---|
| 5-BEDROOM | RESIDENCE VILLA | > |
| 4-BEDROOM | RESIDENCE VILLA | > |
| 3-BEDROOM | RESIDENCE VILLA | > |

WHY YOU'LL LOVE IT

HIGHLIGHTS

- Extensive indoor and outdoor living
- Formal dining for ten
- Complete gourmet kitchen
- Service quarters for two staff, with own separate entrance
- Den with a fully equipped home entertainment system
- Five bedrooms, all with king bed, walk-in closet and ensuite bathroom
- Outdoor showers in each of the separate villa bedroom pavilions
- Private balconies off every bedroom
- Two private pools, located on the upper and lower levels

VIP SERVICES

- Butler service (See Amenities)
- Breakfast prepared daily by your butler
- Complimentary poolside cocktails served daily

[VIEW FLOOR PLAN >](#)

[VIEW STANDARD AMENITIES >](#)

SUITES

| | | |
|-----------|--------------------------|---|
| 3-BEDROOM | ROYAL SUITE | > |
| 2-BEDROOM | PRESIDENTIAL SUITE | > |
| 2-BEDROOM | HILLTOP OCEAN-VIEW SUITE | > |
| 2-BEDROOM | OCEAN-VIEW SUITE | > |

RESIDENCE VILLAS

| | | |
|-----------|-----------------|---|
| 5-BEDROOM | RESIDENCE VILLA | > |
| 4-BEDROOM | RESIDENCE VILLA | > |
| 3-BEDROOM | RESIDENCE VILLA | > |



FIVE-BEDROOM

RESIDENCE VILLA

A spectacular two-storey home on the southern hillside, our Five-Bedroom Residence Villa offers uninterrupted ocean views, facing southwest toward the sunset. Airy French colonial décor throughout creates a light, casual ambience. The upper level is the main social area, featuring the living room, dining room and study, as well as two bedrooms, overlooking a garden and swimming pool. On the lower level, a second swimming pool is formed around a giant granite boulder. Expansive wooden decks connect to three additional bedroom pavilions, including the master suite.



WHY YOU'LL LOVE IT

HIGHLIGHTS

- Two covered and uncovered outdoor decks
- Bright, roomy interiors
- Complete gourmet kitchen
- Separate service quarters for two staff
- Four enormous ensuites, each with a double vanity and sunken bath, glass-walled indoor rain shower plus outdoor shower
- Balcony off every bedroom

VIP SERVICES

- Butler service included (See Amenities)
- Breakfast prepared daily by your butler
- Complimentary poolside cocktails served daily



[VIEW FLOOR PLAN >](#)

[VIEW STANDARD AMENITIES >](#)

SUITES

- 3-BEDROOM ROYAL SUITE >
- 2-BEDROOM PRESIDENTIAL SUITE >
- 2-BEDROOM HILLTOP OCEAN-VIEW SUITE >
- 2-BEDROOM OCEAN-VIEW SUITE >

RESIDENCE VILLAS

- 5-BEDROOM RESIDENCE VILLA >
- 4-BEDROOM RESIDENCE VILLA >
- 3-BEDROOM RESIDENCE VILLA >

FOUR-BEDROOM

RESIDENCE VILLA

Ideal for family and group vacations or longer stays, our Four-Bedroom Residence Villas offer the exclusivity of a private home on two spacious levels. The upper level features a central pavilion for the dining and living room, framed by two bedroom pavilions. On the lower level, the swimming pool is the focal point, adjoined by the pool lounge and two bedroom pavilions. The master suite includes a separate study. Glorious ocean views enhance every setting.



WHY YOU'LL LOVE IT

HIGHLIGHTS

- Three expansive decks and a private pool – perfect for relaxing
- Formal dining for ten
- Complete gourmet kitchen
- Service quarters with separate entrance
- Well-appointed guest rooms, decorated in European contemporary or French colonial styles
- Two master bedrooms, each with bespoke king-sized beds

VIP SERVICES

- Butler service included (See Amenities)
- Breakfast prepared daily by your butler
- Complimentary poolside cocktails served daily

[VIEW FLOOR PLAN >](#)

[VIEW STANDARD AMENITIES >](#)

SUITES

- 3-BEDROOM ROYAL SUITE >
- 2-BEDROOM PRESIDENTIAL SUITE >
- 2-BEDROOM HILLTOP OCEAN-VIEW SUITE >
- 2-BEDROOM OCEAN-VIEW SUITE >

RESIDENCE VILLAS

- 5-BEDROOM RESIDENCE VILLA >
- 4-BEDROOM RESIDENCE VILLA >
- 3-BEDROOM RESIDENCE VILLA >



THREE-BEDROOM

RESIDENCE VILLA

Offering seclusion and privacy, our Three-Bedroom Residence Villas feature a beautiful entrance, setting a calm mood with two serene freshwater ponds. On the upper level, you'll find a living room and formal dining room, open to a spacious ocean-view terrace. On the lower level, there's an expansive pool terrace with an infinity-edge pool, as well as a separate study and a children's bedroom. Two bedroom pavilions frame the pool, each including a private balcony, ensuite bath and outdoor shower.





SUITES

VIEW FLOOR PLANS

- [3-BEDROOM ROYAL SUITE >](#)
- [2-BEDROOM PRESIDENTIAL SUITE >](#)
- [2-BEDROOM HILLTOP OCEAN-VIEW SUITE >](#)
- [2-BEDROOM OCEAN-VIEW SUITE >](#)

FLOOR PLANS

Designed by award-winning architect Cheong Yew Kuan, our Suites and Residence Villas blend harmoniously with the natural landscape. Each accommodation features separate living and sleeping pavilions, expansive sun decks and a private pool.



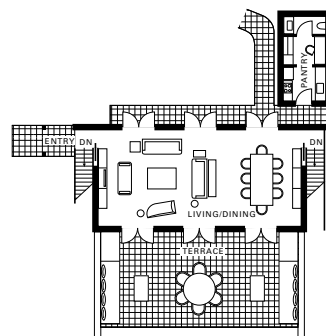
RESIDENCE VILLAS

VIEW FLOOR PLANS

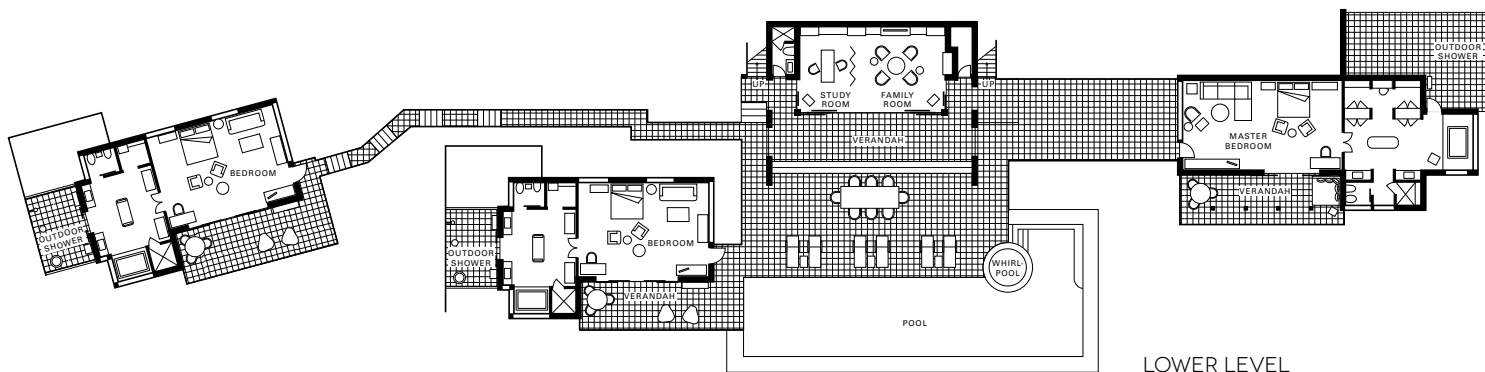
- [5-BEDROOM RESIDENCE VILLA >](#)
- [4-BEDROOM RESIDENCE VILLA >](#)
- [3-BEDROOM RESIDENCE VILLA >](#)

THREE-BEDROOM

ROYAL SUITE



UPPER LEVEL



LOWER LEVEL

DETAILS

SIZE

859 square metres
(9,246 square feet)

LOCATION

Near the beach, in the lower section of the Resort

VIEW

Indian Ocean, Petite Anse beach and tropical forest

BEDS

Two king and two queen beds

BATHROOMS

Three full bathrooms

OCCUPANCY

6 adults, or 6 adults and 3 children

[VIEW SUITE DESCRIPTION >](#)

[VIEW STANDARD AMENITIES >](#)

SUITES

3-BEDROOM ROYAL SUITE >

2-BEDROOM PRESIDENTIAL SUITE >

2-BEDROOM HILLTOP
OCEAN-VIEW SUITE >

2-BEDROOM OCEAN-VIEW SUITE >

RESIDENCE VILLAS

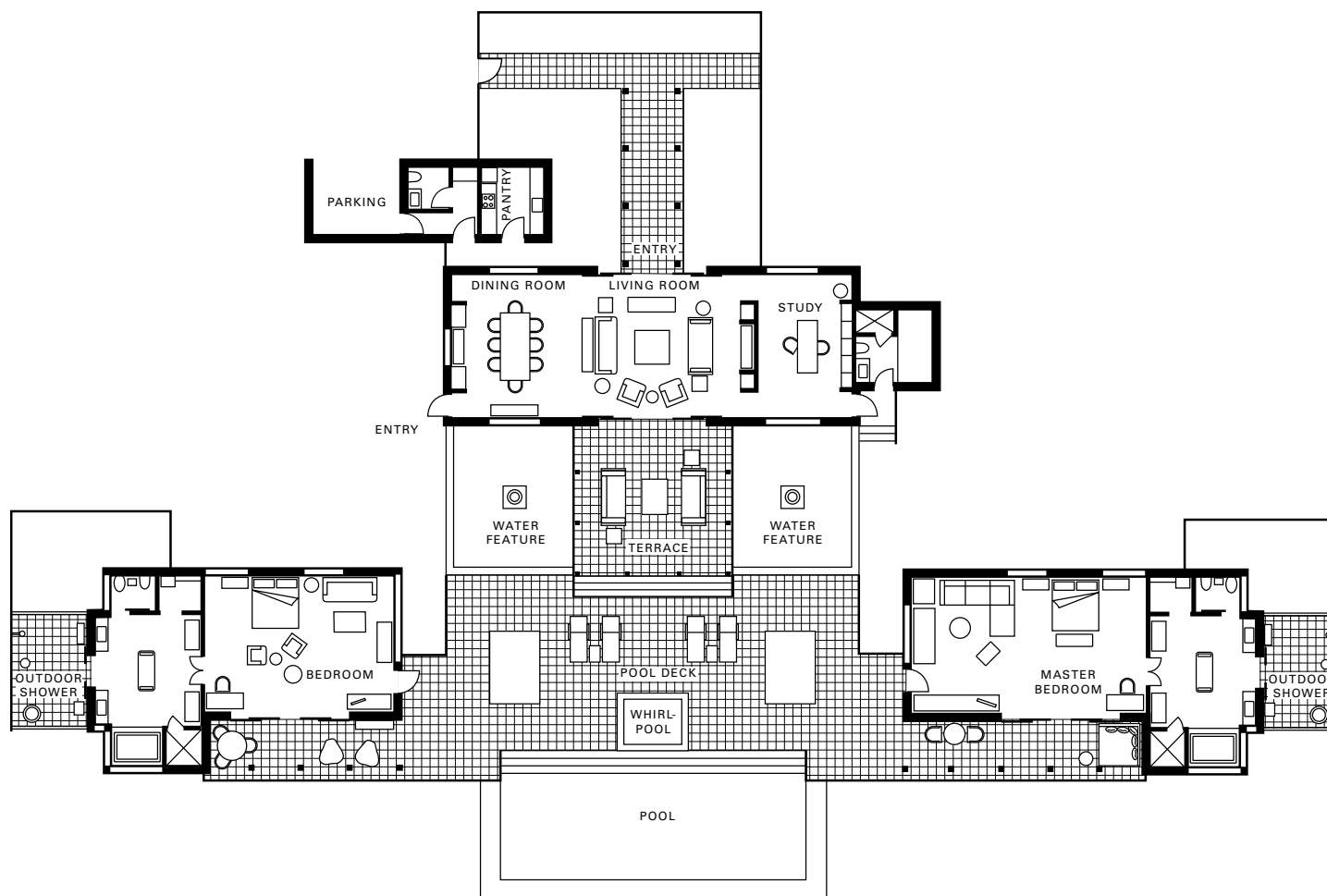
5-BEDROOM RESIDENCE VILLA >

4-BEDROOM RESIDENCE VILLA >

3-BEDROOM RESIDENCE VILLA >

TWO-BEDROOM

PRESIDENTIAL SUITE



DETAILS

SIZE

734 square metres
(7,901 square feet)

LOCATION

Near the beach, in the lower section of the Resort

VIEW

Indian Ocean and tropical forest

BEDS

One king and two queen beds

BATHROOMS

Two full bathrooms

OCCUPANCY

4 adults, or 4 adults and 2 children

[VIEW SUITE DESCRIPTION >](#)

[VIEW STANDARD AMENITIES >](#)

SUITES

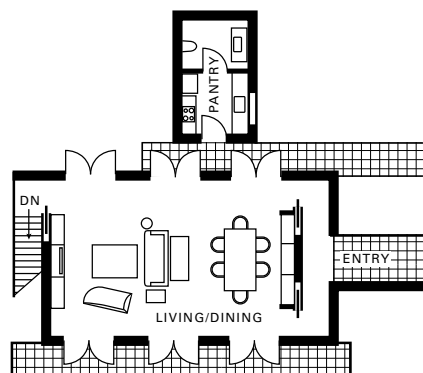
- 3-BEDROOM [ROYAL SUITE >](#)
- 2-BEDROOM [PRESIDENTIAL SUITE >](#)
- 2-BEDROOM [HILLTOP OCEAN-VIEW SUITE >](#)
- 2-BEDROOM [OCEAN-VIEW SUITE >](#)

RESIDENCE VILLAS

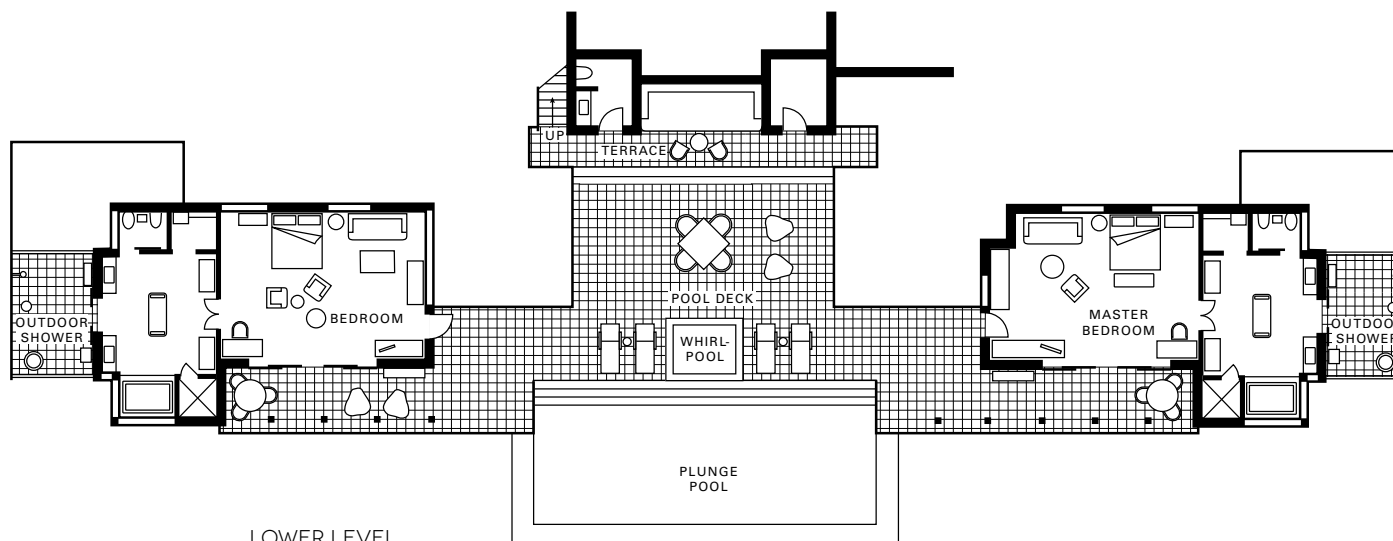
- 5-BEDROOM [RESIDENCE VILLA >](#)
- 4-BEDROOM [RESIDENCE VILLA >](#)
- 3-BEDROOM [RESIDENCE VILLA >](#)

TWO-BEDROOM

HILLTOP OCEAN-VIEW SUITE



UPPER LEVEL



LOWER LEVEL

DETAILS

SIZE

542 square metres
(5,835 square feet)

LOCATION

On the hill, high above the Resort

VIEW

Indian Ocean and tropical forest

BEDS

One king and two queen beds

BATHROOMS

Two full bathrooms

OCCUPANCY

4 adults, or 4 adults and 2 children

[VIEW SUITE DESCRIPTION >](#)

[VIEW STANDARD AWMENTITIES >](#)

SUITES

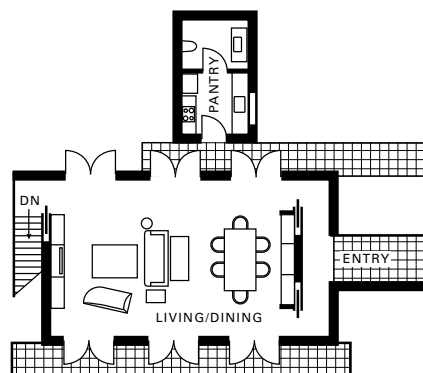
- 3-BEDROOM ROYAL SUITE >
- 2-BEDROOM PRESIDENTIAL SUITE >
- 2-BEDROOM HILLTOP OCEAN-VIEW SUITE >
- 2-BEDROOM OCEAN-VIEW SUITE >

RESIDENCE VILLAS

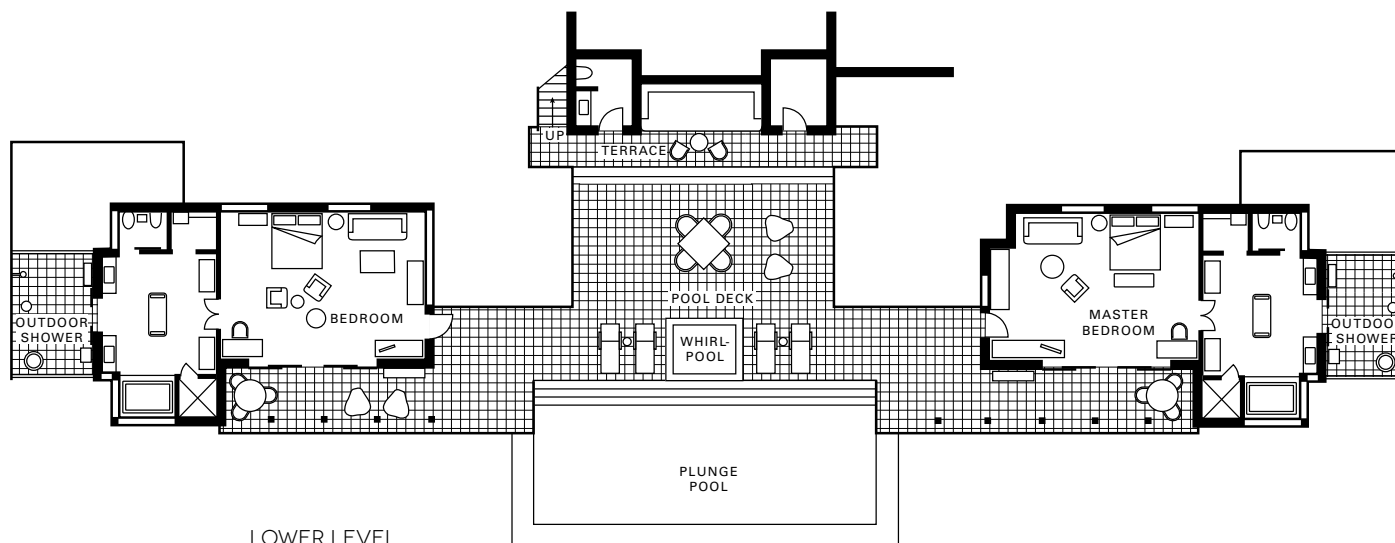
- 5-BEDROOM RESIDENCE VILLA >
- 4-BEDROOM RESIDENCE VILLA >
- 3-BEDROOM RESIDENCE VILLA >

TWO-BEDROOM

OCEAN-VIEW SUITE



UPPER LEVEL



LOWER LEVEL

DETAILS

SIZE

524 square metres
(5,641 square feet)

LOCATION

On the hill, in the middle section of the Resort

VIEW

Indian Ocean and tropical forest

BEDS

One king and two queen beds

BATHROOMS

Two full bathrooms

OCCUPANCY

4 adults, or 4 adults and 2 children

[VIEW SUITE DESCRIPTION >](#)

[VIEW STANDARD AMENITIES >](#)

SUITES

- 3-BEDROOM ROYAL SUITE >
- 2-BEDROOM PRESIDENTIAL SUITE >
- 2-BEDROOM HILLTOP OCEAN-VIEW SUITE >
- 2-BEDROOM OCEAN-VIEW SUITE >

RESIDENCE VILLAS

- 5-BEDROOM RESIDENCE VILLA >
- 4-BEDROOM RESIDENCE VILLA >
- 3-BEDROOM RESIDENCE VILLA >

DETAILS

SIZE

1,400 square metres
(15,064 square feet)

LOCATION

Upper section of the Resort

VIEW

Ocean

BEDS

Five king beds

BATHROOMS

Five full bathrooms

OCCUPANCY

10 adults, or 6 adults
and 6 children

[VIEW VILLA DESCRIPTION >](#)

[VIEW STANDARD AMENITIES >](#)

SUITES

3-BEDROOM ROYAL SUITE >

2-BEDROOM PRESIDENTIAL SUITE >

2-BEDROOM HILLTOP
OCEAN-VIEW SUITE >

2-BEDROOM OCEAN-VIEW SUITE >

RESIDENCE VILLAS

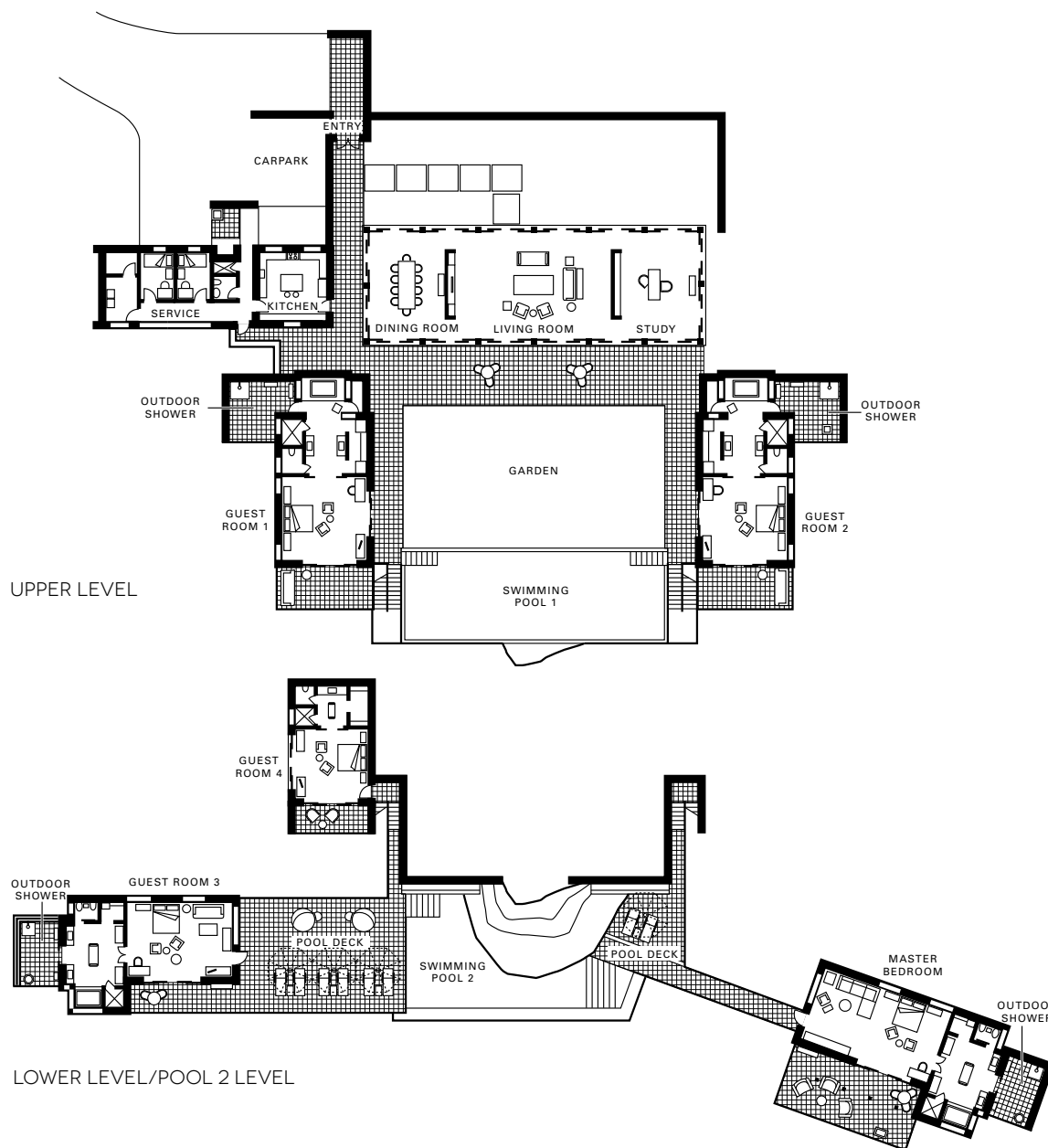
5-BEDROOM RESIDENCE VILLA >

4-BEDROOM RESIDENCE VILLA >

3-BEDROOM RESIDENCE VILLA >

FIVE-BEDROOM

RESIDENCE VILLA



DETAILS

SIZE

1,388 square metres
(14,935 square feet)

LOCATION

Upper section of the Resort

VIEW

Ocean

BEDS

Four king beds

BATHROOMS

Four full bathrooms, plus
one powder room

OCCUPANCY

10 adults, or 6 adults and
4 children

[VIEW VILLA DESCRIPTION >](#)

[VIEW STANDARD AMENITIES >](#)

SUITES

3-BEDROOM ROYAL SUITE >

2-BEDROOM PRESIDENTIAL SUITE >

2-BEDROOM HILLTOP
OCEAN-VIEW SUITE >

2-BEDROOM OCEAN-VIEW SUITE >

RESIDENCE VILLAS

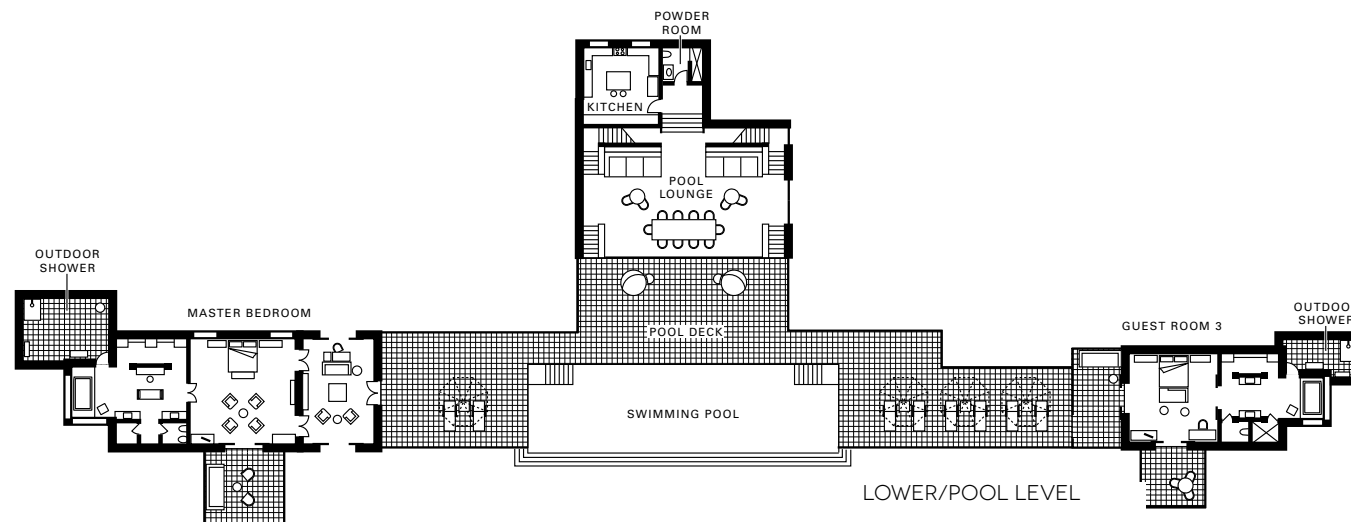
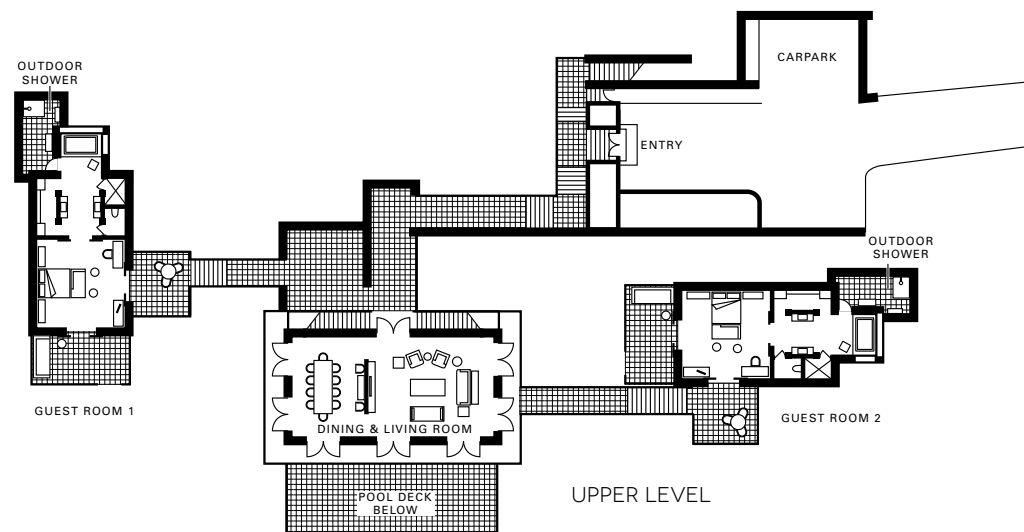
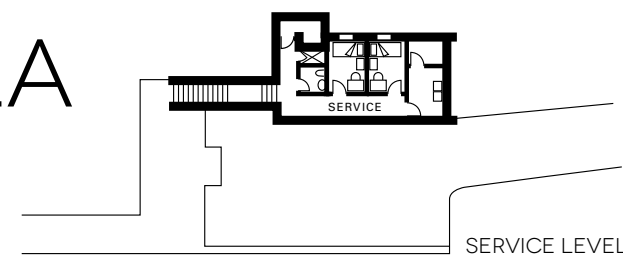
5-BEDROOM RESIDENCE VILLA >

4-BEDROOM RESIDENCE VILLA >

3-BEDROOM RESIDENCE VILLA >

FOUR-BEDROOM

RESIDENCE VILLA



DETAILS

SIZE

971 square metres
(10,448 square feet)

LOCATION

Upper section of the Resort

VIEW

Garden and ocean

BEDS

Two king beds and two twin beds

BATHROOMS

Three full bathrooms, plus
guest powder room

OCCUPANCY

8 adults, or 4 adults and 4 children

[VIEW VILLA DESCRIPTION >](#)

[VIEW STANDARD AMENITIES >](#)

SUITES

3-BEDROOM ROYAL SUITE >

2-BEDROOM PRESIDENTIAL SUITE >

2-BEDROOM HILLTOP
OCEAN-VIEW SUITE >

2-BEDROOM OCEAN-VIEW SUITE >

RESIDENCE VILLAS

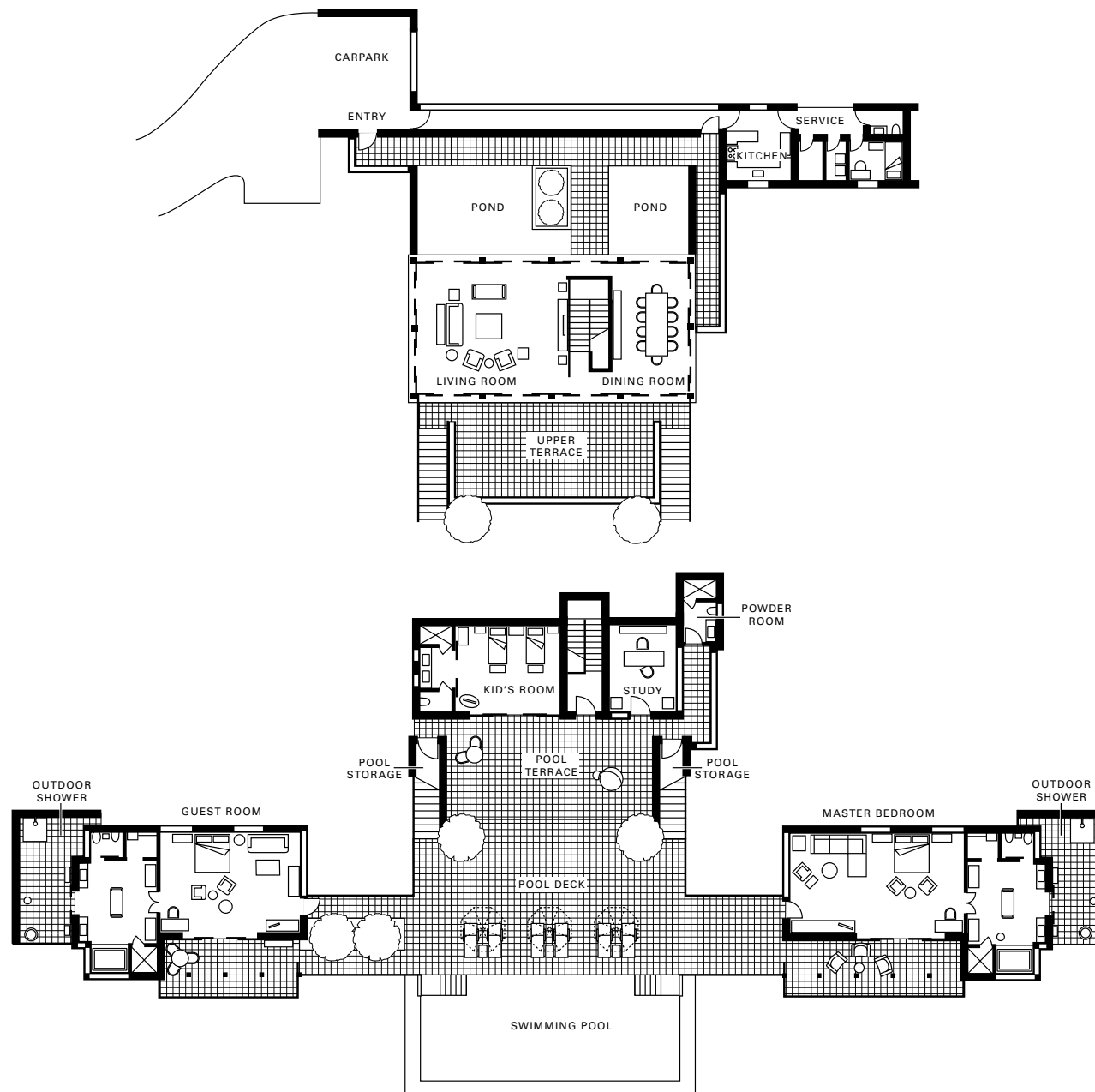
5-BEDROOM RESIDENCE VILLA >

4-BEDROOM RESIDENCE VILLA >

3-BEDROOM RESIDENCE VILLA >

THREE-BEDROOM

RESIDENCE VILLA





STANDARD AMENITIES

These amenities and services are standard in all Suites and Residence Villas at Four Seasons Resort Seychelles.

GENERAL FEATURES

- Infinity-edge pool, plus whirlpool
- Teak hardwood deck with chaises longues for sunbathing and an outdoor dining table
- Air conditioning
- Bellman service with electrically powered carts, available 24 hours a day, for transportation throughout the Resort

PANTRY (IN SUITES)

Refrigerator, freezer, oven, fridge, tea and coffee making facilities.

KITCHEN (IN RESIDENCE VILLAS)

Full modern kitchen with Miele appliances and Viking range top, suitable for professional use. Grocery-stocking service available.

BED AND BATH

- Down duvets and pillows
- Indoor/outdoor showers
- Deep soaking tub
- Private WC with bidet
- Walk-in closet/dressing area
- Hypoallergenic bedding on request
- Hair dryer
- Slippers

INTERNET ACCESS

- In-room wireless Internet access
- Two Internet-equipped workstations located in the Resort library

ENTERTAINMENT

- 107-centimetre (42-inch) flat-screen television in living room and each bedroom
- DVD/CD player
- iPod docking station
- Resort library

FAMILY FEATURES

- Childproofing and a full range of children's amenities
- Family-oriented activities
- Complimentary children's items such as cribs, strollers, toiletries and more

RESORT SERVICES

- Multilingual Concierge
- In-Villa Dining
- Twice-daily housekeeping with evening turndown service
- 24-hour laundry and dry cleaning services
- Outdoor pool
- Children's and family programmes
- Complimentary shoeshine and valet parking
- Water sports pavilion
- Fitness centre
- Jogging trail

[VIEW BUTLER SERVICES](#) ➤



BUTLER SERVICES

Private butler service is included in the Royal Suite, Presidential Suite and all Residence Villas at Four Seasons Resort Seychelles. The service may also be requested for other suite types.

Our Four Seasons butlers take care of all the details of daily life, meaning you have more time to relax and enjoy your stay. Passionate about service, our butlers add an array of welcoming, personal details, especially as they get to know your unique preferences.

With connections and contacts across the island, they can go the extra distance to meet your requests – sometimes even before you've asked a question!

Services include:

- In-villa express check-in and check-out
- Packing and unpacking
- Coordination of all services, such as housekeeping, landscaping and engineering, to make sure they work around your schedule
- Preparation and serving of breakfast
- Serving afternoon cocktails on the terrace
- Arrangement of daily activities and excursions, such as restaurant, hotel, flight, helicopter and yacht bookings, creating private events, and arrange babysitting services

Your Four Seasons butler creates a truly bespoke service to elevate every day – within your accommodation, around the Resort, and outside on excursions around the Seychelles.

[VIEW STANDARD AMENITIES](#) ➤



RESORT LIFESTYLE

Only a few moments from your Suite or Residence Villa, all the pleasures of Four Seasons Resort Seychelles await your discovery. Enjoy the restaurants, pool, fitness centre and spa – or ignore them all and hide away in blissful seclusion.

- [DINING](#) >
- [SPA](#) >
- [ACTIVITIES](#) >





DINING

Take your friends and family out for a memorable meal. Or escape for a romantic date night just for two. Choose from our bar and three restaurants, set hillside and beachside. Diverse flavours capture the cultural mix of the Seychelles, as internationally recognised chefs serve up their own interpretations of European, Japanese, Southeast Asian and Creole-inspired cuisine. If you prefer to savour your privacy and enjoy a meal on your own terrace, simply request Four Seasons In-Villa Dining.

[LEARN MORE ABOUT DINING OPTIONS](#) ▶

[DINING](#) >

[SPA](#) >

[ACTIVITIES](#) >





SPA

High above the beach, brushed by gentle breezes at the summit of the hill, the Spa at Four Seasons Resort Seychelles promises the finest skin care and massage. Relax in one of our eight individual and couple's private spa pavilions, each with heavenly views of Petite Anse. Experience pampering inspired by ancient Indian and Asian traditions, blending local herbs and spices with all-natural products by Ila, Sodashi and Yi King. Or let the spa come to you, choosing from select treatments available in the privacy of your Suite or Residence Villa.

[LEARN MORE ABOUT SPA TREATMENTS](#) ▶

- [DINING](#) >
- [SPA](#) >
- [ACTIVITIES](#) >





ACTIVITIES

The Seychelles are a natural wonderland, and with the Four Seasons Concierge at your service, planning an afternoon outing or a day trip is easy. Visit local galleries, museums and shops. Sail across the waves, then snorkel, scuba dive and stop for a picnic on a deserted beach. Island-hop by yacht or helicopter to explore the many highlights of the archipelago. Fly to a nearby golf course, visit one of the world's largest seabird colonies, or discover the UNESCO World Heritage wonder of the Vallée de Mai, where you can stroll amidst a dense jungle of over 4,000 coco de mer palms – the towering trees, with their distinctive seed, found only in the Seychelles.

[LEARN MORE ABOUT THINGS TO DO](#) 

[DINING](#) >

[SPA](#) >

[ACTIVITIES](#) >



CONNECT WITH US

For more information about our Suites and Residence Villas, please feel free to be in touch.

Telephone: (248) 439 3000

E-mail: reservations.sey@fourseasons.com

Web site: www.fourseasons.com/seychelles

 facebook.com/FourSeasonsResortSeychelles

 twitter.com/FSseychelles



FOUR SEASONS RESORT

Seychelles

FOUR SEASONS RESORT SEYCHELLES

Petite Anse, Baie-Lazare, P.O. Box 1397

Victoria, Mahé, Seychelles

